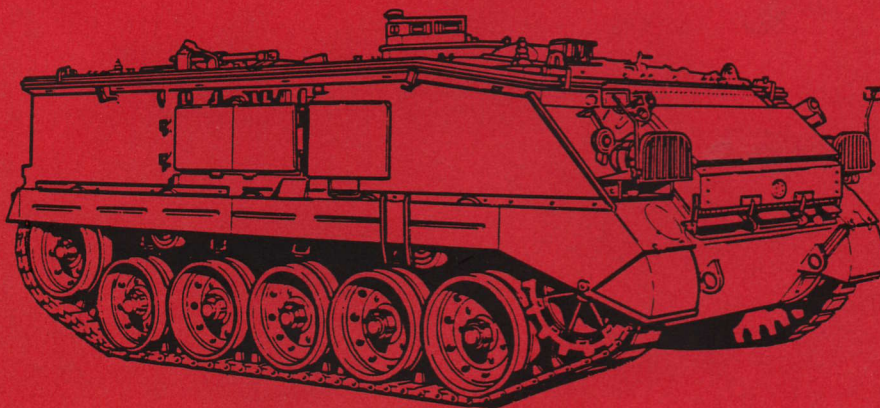


WARNING!
This is not a TQM authorised document
— the information may have been superseded.

FV 430 SERIES



"THIS DOCUMENT IS THE PROPERTY OF HER BRITANNIC MAJESTY'S GOVERNMENT, and is issued for the information of such persons only as need to know its contents in the course of their official duties. Any person finding this document should hand it into a British forces unit or to a police station for its safe return to the MINISTRY OF DEFENCE D.MOD Sy LONDON SW1A 2HB with particulars of how and where found. THE UNAUTHORISED RETENTION OR DESTRUCTION OF THE DOCUMENT IS AN OFFENCE UNDER THE OFFICIAL SECRETS ACTS OF 1911-1989. (When released to persons outside Government service, this document is issued on a personal basis and the recipient to whom it is entrusted in confidence within the provision of the Official Secrets Acts 1911-1989 is personally responsible for its safe custody and for seeing that its contents are disclosed only to authorised persons)."

CONTENTS LIST

Contents List	
Chapter One	Introduction and Safety
Chapter Two	Power Pack
Chapter Three	Cooling System
Chapter Four	Fuel System
Chapter Five	Steering Unit
Chapter Six	Final Drive
Chapter Seven	Suspension and Running Gear

CHAPTER 1

INTRODUCTION AND SAFETY

LIST OF CONTENTS

Para		Page
1.1	FV 430 Series of Vehicles.....	1
1.2	Specialist Roles of the FV 432.....	2
1.3	Data.....	2
1.4	Safety Precautions.....	2

LIST OF ILLUSTRATIONS

Fig		Page
1.1	Component Layout — FV 432.....	3

1.1 FV 430 SERIES OF VEHICLES

Number	Series
FV 432	Personnel Carrier
FV 433	Abbot 105 mm Self-Propelled Gun
FV 434	Carrier Maintenance
FV 435	Wavell
FV 436	Cymbeline (radar)
FV 438	Carrier Launcher (ATGW)
FV 439	Radio Relay (Ptarmigan)

1.2 SPECIALIST ROLES OF THE FV 432

Roles	Remarks
Personnel Carrier	2 crew + 10
Mortar 81 mm	Infantry support
Milan	Infantry support
Command Post	Map boards and extra radios
Ambulance	2 Stretcher with walking wounded
Ambulance	4 Stretcher no walking wounded
Winch	Fitted into fitters vehicle
FACE	Computer used by RA
Turret Mtd GPMG	Infantry support

1.3 DATA

Maximum Speed	32.5 mph
Fuel consumption: Road	3.0 mpg
Cross country	1.7 mpg
Minimum turning radius	17.5 ft
Maximum vertical obstacle	2.0 ft
Maximum gradient	35.0 degrees

1.4 SAFETY PRECAUTIONS

Before commencing any repair to a vehicle, ensure that the following precautions are carried out:

- a. *Securely chock the tracks.*
- b. *Turn off the fuel cock.*
- c. *Turn off all battery master switches.*
- d. *The vehicle should be on flat and level ground.*
- e. *Goggles must be worn by all participants when track splitting.*
- f. *Inspect all lifting tackle and special tools for the following:*
 - (1) *Twisting or cracking.*
 - (2) *Damage to threads.*
 - (3) *Damage to rope or wire slings.*

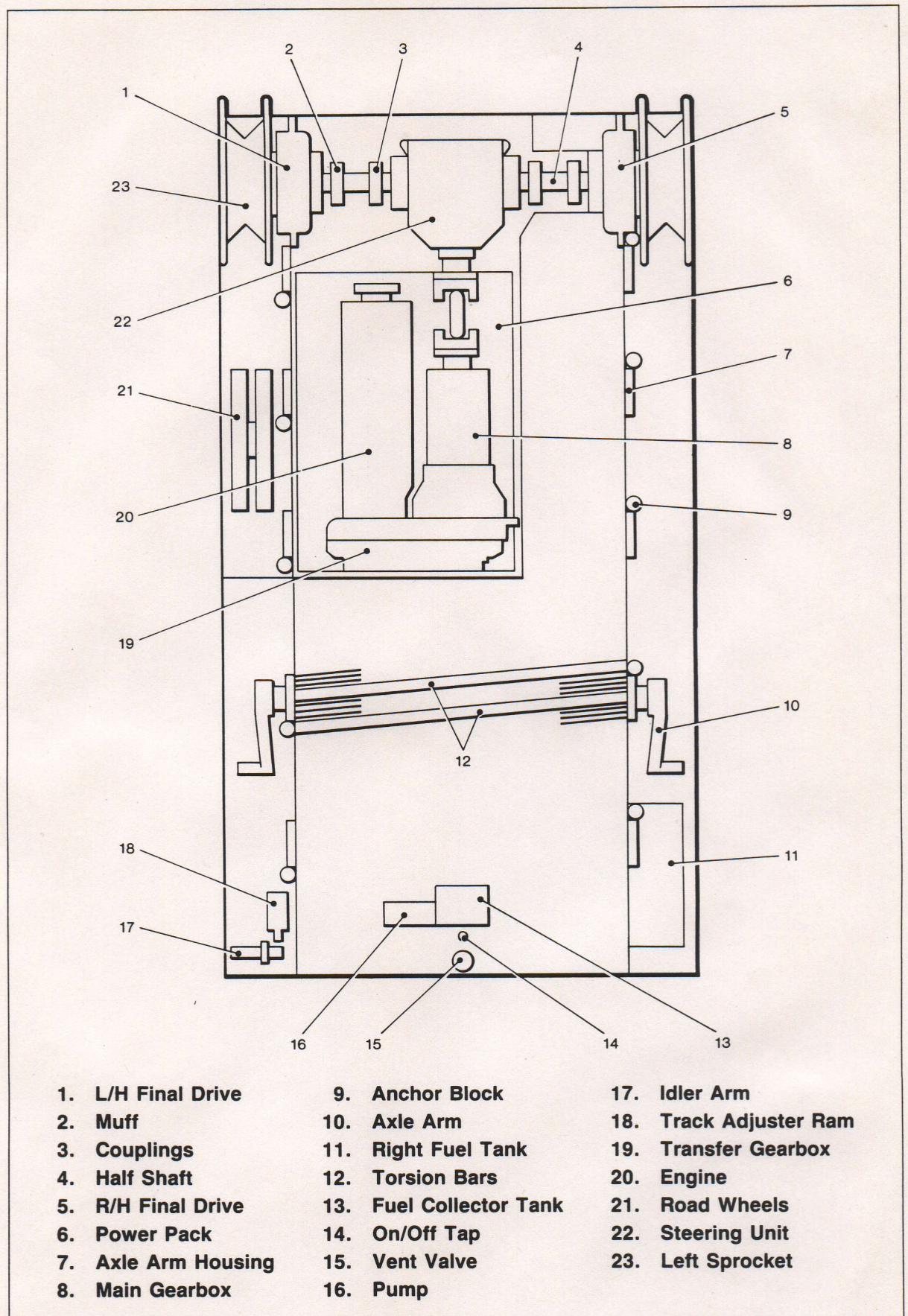


Fig 1.1 Component Layout — FV 432